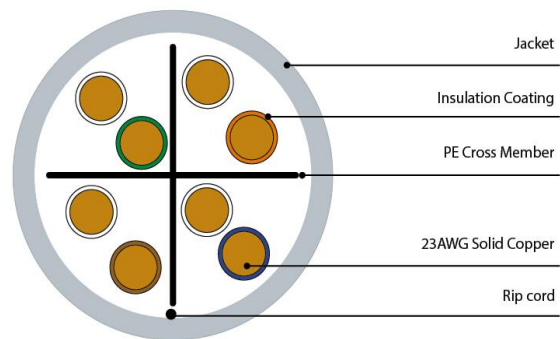
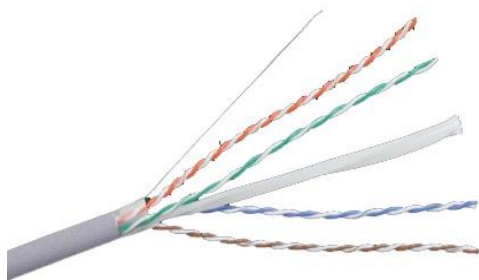


## TECHNICAL DATA SHEET UTP CAT.6 WELL

### Electrical Performance (20°C)

Low frequency and D.C						
Item		Parameter				Note
Conductor resistance		$\leq 9.5\Omega/100m$				
Insulation resistance		$\geq 5000M\Omega Km(DC500V \text{ Charged } 1Min)$				
Voltage endurance		DC 1500V/min				
Mutual capacitance		$\leq 5.6nF/100m$				
Core-core resistance unbalance		$\leq 5\%$				
High frequency performance						
Item Freq	Attenuation $\leq dB/100m$	Return loss $\geq dB/100m$	NEXT $\geq dB/100m$	PSNEXT $\geq dB/100m$	ACR-F $\geq dB/100m$	Note
1MHz	3.0	19.0	65.0	62.0	63.3	FLUKE TIA CAT6 Channel TEST
4MHz	4.0	19.0	63.0	60.5	51.2	
10MHz	6.3	19.0	56.6	54.0	43.2	
16MHz	8.0	19.0	53.2	50.6	39.2	
20MHz	9.0	17.5	51.6	49.0	37.2	
31.25MHz	11.4	16.5	48.4	45.7	33.3	
62.5MHz	16.5	14.0	43.4	40.6	27.3	
100MHz	21.3	12.0	39.9	37.1	23.2	
200MHz	31.5	9.0	34.8	31.9	17.2	
250MHz	36.0	8.0	33.1	30.2	15.3	

### Structure drawing:



Color of twisted pair (Arabic numerals in structure drawing stand for the twisted pair)

No.	Color of insulation	
	With stripe	Non stripe
1	White/Blue	Blue
2	White/Orange	Orange
3	White/Green	Green
4	White/Brown	Brown